

CRIMINAL DAMAGE

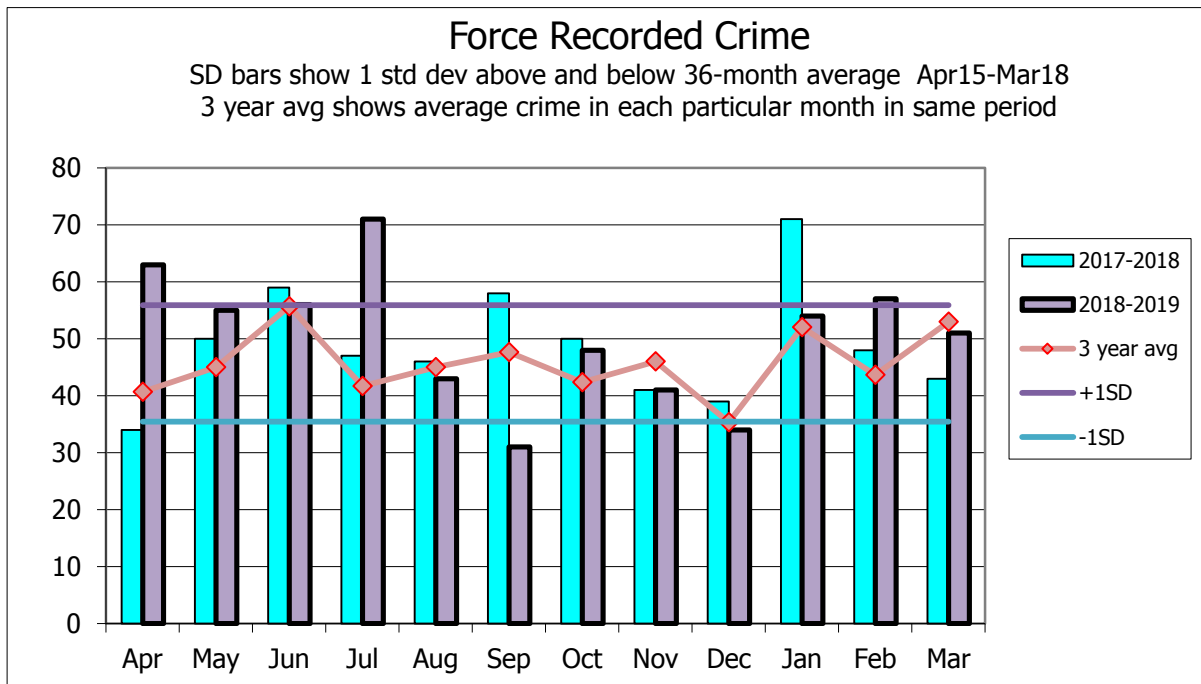


Chart shows number of crimes recorded in each month (excluding records with status of rejected/duplicate or No Crime), relating to crimes committed over **All Island**.

Crime Recorded since April	10-11	11-12	12-13	13-14	14-15	15-16	16-17	17-18	18-19	change this/last year	change this/average last 3 years
	831	777	698	563	575	473	585	586	604	+3%	+10%

Table above shows comparison between same period since April 1st each crime year, as published in previous reports, and below the detection rates for last five years.

Detection Rate	13-14	14-15	15-16	16-17	17-18	18-19	Change from last year
Criminal Damage	30.6%	25.6%	31.3%	20.9%	24.7%	25.5%	+0.8%